

COILING FIRE DOOR—MODEL F12PS

08330/ATL
Buyline 0371

SPECIFICATIONS

PART 1 GENERAL

1.01 Section Includes

- A. Type:** Coiling Fire Doors are to be Atlas Door™ Model F12PS as manufactured by Clopay Building Products Company, Inc.
- B. Operation:** To be manual push-up.
- C. Mounting:** To be interior mounted between jambs and under lintel in a prepared opening.
- D. Approval:** Doors to be tested and approved by Underwriters' Laboratories, Inc. (Underwriters' Laboratories of Canada).
- E. Label:** Doors up to 139 sq. ft. (12.9 m²) in area and up to 12'-11" (3937 mm) in width or 12'-0" (3658 mm) in height to be furnished with UL (ULC) class A (3-hour) rating and may also be installed in openings with a lower rating.
- F. Oversize:** Door over these dimensions but less than 40'-0" (12.19 m) wide and 30'-0" (9.15 m) in height to be supplied with UL oversized certificate or label.
- G. Automatic Closing:** Triggering of automatic closing mechanism by melting of fusible link at 165°F (74°C).

1.02 Related Work

- A.** Opening preparation, miscellaneous or structural steel, access panels, finish or field painting are in the scope of the work of other sections or trades.
- B.** Submit manufacturer's product data and installation instructions for each type of coiling door. Include both published data and any specific data prepared for this project.

1.03 Single-Source Responsibility

- A.** Provide doors, guides, motors, and accessories from one manufacturer for each type of door. Provide secondary components from source acceptable to manufacturer of primary components.

PART 2 PRODUCT

2.01 Curtain

- A. Slats:** Cold roll-formed in continuous lengths of galvanized steel interlocked to form curtains.

- B. Endlocks:** Each end of alternate slats to be fitted with malleable iron endlocks to act as a wearing surface in the guides, to maintain slat alignment and to prevent flame passage.

- C. Gauge:** Thickness of slat to satisfy Underwriters' Laboratories (ULC) requirements.

- D. Galvanizing:** Zinc-coated in accordance with ASTM A653.

- E. Bottom Bar:** Curtain to be reinforced with a bottom bar consisting of two steel angles. Lift handles to be provided on both sides of door.

2.02 Spring Counterbalance

- A. Counterbalance:** Housed in a steel pipe of diameter and wall thickness to restrict maximum deflection to .03" per foot (2.5 mm/m) of door width.

- B. Springs:** To be helical torsion type designed to include an overload factor of 25% and for optimum ease of operation. Springs are to be grease-packed and are to be mounted on a cold rolled steel inner shaft.

- C. Spring Tension:** Adjustable from outside of end bracket plate.

- D. Ball Bearing:** Sealed, to minimize wear of pipe shaft rotation around inner shaft.

2.03 Bracket Plates

- A. Bracket Plates:** Carrying pipe counterbalancing shaft are to be no less than 1/4" (6.35 mm) thickness and to house end of door coil. Shape of plate to be square.

- B. Drive End Bracket Plate:** Fitted with a sealed ball bearing.

- C. Governor:** Door to be equipped with a governor as required to control speed of descent.

2.04 Guide and Wall Angle Assembly

- A. Guides/Wall Angles:** Structural steel angles of 3/4" (4.76 mm) minimum thickness.

2.05 Hoods

- A. Hoods:** To house coil are to be fabricated of #24 U.S. Gauge galvanized steel.

- B. Reinforcing:** To be laterally reinforced to prevent sag.

- C. Intermediate Hood Supports:** Furnish where door width exceeds 12'-0" (3658 mm).

- D. Fascia:** Provide galvanized closure as required.

2.06 Locking

- A. Slide Bolts:** On bottom bar suitable for padlocking (padlocks by others).

2.07 Finish

- A. Galvanized Surfaces:** Slats and hood (etc.) galvanized. Baked-on gray or tan coat of epoxy-modified polyester on slats and hood. Shop coat of rust-inhibiting metallic primer on all remaining ungalvanized surfaces, except bearings.

- B. Ungalvanized Surfaces:** Shall consist of a shop coat of rust-inhibiting metallic primer (gray/brown) on exposed ferrous surfaces, except bearings.

PART 3 EXECUTION

3.01 Examination

- A.** Verify that dimensions are correct and project conditions are suitable for installation. Do not proceed with installation until unsatisfactory conditions have been corrected.

3.02 Installation

- A. Installation:** To be by an authorized Atlas Door representative and in accordance with Atlas Door standards and instructions.

- B. Compliance:** Installation to be in compliance with the latest NFPA 80.

- C. Testing:** Doors to be drop-tested and witnessed for normal operation after installation.

- D. Maintenance:** Per NFPA 80, Chapter 15-2.4.3. All horizontal or vertical sliding and coiling fire doors shall be inspected and tested annually to check for proper operation and full closure. Resetting of the release mechanism shall be done in accordance with the manufacturer's instructions. A written record shall be maintained and be made available to the authority having jurisdiction.

- E.** Submit manufacturer's product data and installation instructions for each type of coiling door. Include both published data and any specific data prepared for this project.

- Note to Specifiers...** Please see end of this section for frequently specified Optional Features.

Clear Opening Height	"D"	"G"	Clear Opening Width	"E"	"F"	"A"
to 7'-0" (2134 mm)	16" (406 mm)	18" (457 mm)	to 12'-11" (3937 mm)	3" (76.2 mm)	4" (101.6 mm)	8 1/2" (215.9 mm)
7'-0" to 8'-7" (2137 mm) (2616 mm)	17" (432 mm)	19" (483 mm)	12'-11" to 24'-0" (3940 mm) (7315 mm)	3 1/2" (86.9 mm)	4 1/2" (114.3 mm)	Consult Technical Services
8'-7" to 11'-0" (2619 mm) (3363 mm)	18" (457 mm)	20" (508 mm)	over 24'-0" (7315 mm)		Consult Technical Services	
11'-0" to 12'-7" (3356 mm) (3835 mm)	19" (483 mm)	21" (533 mm)				
12'-7" to 15'-7" (3839 mm) (4790 mm)	20" (508 mm)	22" (559 mm)				
15'-7" to 18'-0" (4793 mm) (5486 mm)	21" (533 mm)	23" (584 mm)				
over 18'-0" (5486 mm)		Consult Technical Services				

If "B", "C", or "D" Label: Substitute for "F"
* "4" = 3 1/2"
(114.3 mm) = (108.0 mm)

* For additional limitations and ratings from various listing agencies, please refer to Sweet's Catalog in this manual.

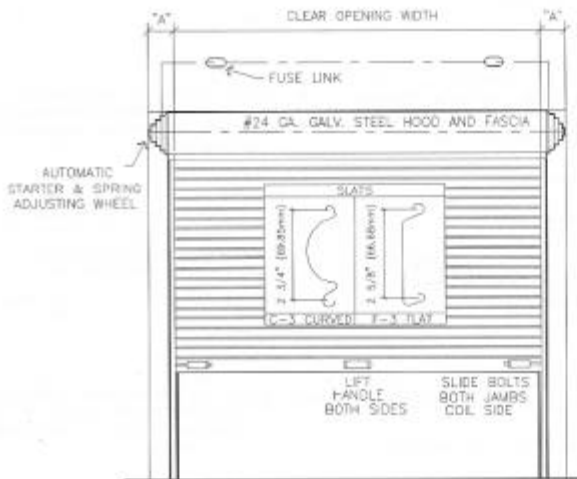
COILING FIRE DOOR-MODEL F12*

08330/ATL
Buyline 0371

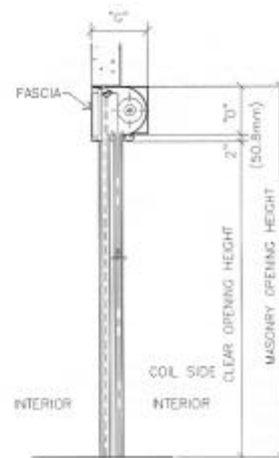
- Manually operated
- Interior between jamb mounted
- Thru wall fuse links

*Suffix letters indicate material and/or finish of curtain.
For alternate material or finish of curtain see Optional Features.

GS Galvanized, without baked-on finish coat
PS Galvanized with baked-on finish coat
ST Stainless steel



COIL SIDE ELEVATION
RIGHT HAND OPERATION AS SHOWN
LEFT HAND OPERATION IS OPPOSITE AS SHOWN

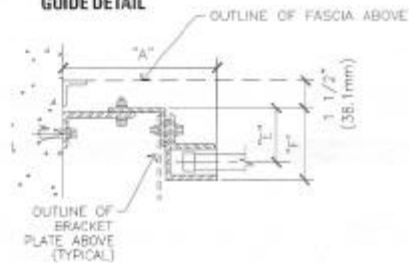


SECTION

Atlas Door™ has UL approval for mounting on drywall and steel tube walls. Consult Technical Services at 800-959-9559 for complete details and size limitations, or for assistance on any special applications.

Where clearances are critical, dimensions shown can be reduced. Consult Technical Services.

GUIDE DETAIL



atlas door™