

COILING FIRE DOOR-MODEL F22PS

SPECIFICATIONS

PART 1 GENERAL

1.01 Section Includes

- A. Type:** Coiling Fire Doors are to be Atlas Door™ Model F22PS as manufactured by Clopay Building Products Company, Inc.
- B. Operation:** To be chain hoist operated using gear reduction and galvanized hand chain and featuring FIRESET 3 Chain Operation. FIRESET 3 to provide standard operation under normal hand chain operating conditions. Under fire door testing conditions, chain operator allows fire door to drop mechanically by release of test/reset handle and reset from floor. Operation to conform to NFPA 80.
- C. Mounting:** To be interior between jamb and under lintel on a prepared opening.
- D. Approval:** Doors to be tested and approved by Underwriters' Laboratories, Inc. (Underwriters' Laboratories of Canada).
- E. Label:** Doors up to 139 sq. ft. (12.9 m²) in area and up to 12'-11" (3937 mm) in width or 12'-0" (3659 mm) in height to be furnished with UL (ULC) class A (3 hour) rating and may also be installed in openings with lower rating.
- F. Oversize:** Door over these dimensions but less than or equal to 24'-0" (732 m) wide and 16'-0" (4.88 m) in height to be supplied with UL oversized certificate or label.
- G. Automatic Closing:** Triggering of automatic closing mechanism by melting of fusible link at 165°F (74°C).

1.02 Related Work

- A.** Opening preparation, miscellaneous or structural steel, access panels, finish or field painting are in the scope of the work of other sections or trades.
- B.** Submit manufacturer's product data and installation instructions for each type of coiling fire door. Include both published and any specific data prepared for this project.

1.03 Single-Source Responsibility

- A.** Provide doors, guides, and accessories from one manufacturer for each type of door. Provide secondary components from source acceptable to manufacturer of primary components.

PART 2 PRODUCT

2.01 Curtains

- A. Slats:** Cold roll-formed in continuous lengths of galvanized steel interlocked to form curtains.
- B. Endlocks:** Each end of alternative slats to be fitted with malleable iron endlocks to act as a

wearing surface in the guides, to maintain slat alignment and to prevent flame passage.

- C. Gauge:** Thickness of slat to satisfy Underwriters' Laboratories (ULC) requirements.
- D. Galvanizing:** Zinc-coated in accordance with ASTM A653.

E. Bottom Bar: Curtain to be reinforced with a bottom bar consisting of two steel angles. Lift handles to be provided on both sides of door.

2.02 Spring Counterbalance

- A. Counterbalance:** Housed in a steel pipe of diameter and wall thickness to restrict maximum deflection of .03" per foot (2.5 mm/m) of door width.
- B. Springs:** To be helical torsion type designed to include an overload factor of 25% and for optimum ease of operation. Springs are to be grease-packed and are to be mounted on a cold rolled steel inner shaft.
- C. Hand Chain:** Pull not to exceed 35 lbs. (156N) for daily applications.
- D. Spring Tension:** Adjustable from outside of end bracket plate.
- E. Ball Bearing:** Sealed, to minimize wear of pipe shaft rotation around inner shaft.

2.03 Bracket Plates

- A. Bracket Plates:** Carrying pipe counterbalancing shaft are to be no less than 1/4" (6.35 mm) thickness and to house end of door coil. Shape of plate to be square.
- B. Drive End Bracket Plate:** To be FIRESET 3 Chain Operation. FIRESET 3 to provide standard operation under normal hand chain operating conditions. Under fire door testing conditions, chain operator allows fire door to drop mechanically by release of test/reset handle and reset from floor. Operation to conform to NFPA 80. Under fire emergency operation, fuse link will melt, causing chain to disengage and allow door to drop to floor. Reset handle to allow door to be reset to full operational condition. No additional clearance beneath bracket plates.
- C. Test/Reset Handle:** To be floor level for testing. Handle to be contained in enclosure and wall mounted.
- D. Governor:** Door to be equipped with a governor, internal to FIRESET 3 Chain Operation, to control speed of descent during fire emergency operation.

2.04 Guide and Wall Angle Assembly

- A. Guides/Wall Angles:** Structural steel angles of 3/16" (4.76 mm) minimum thickness.

2.05 Hoods

- A. Hoods:** To house coil are to be fabricated of #24 U.S. Gauge galvanized steel.

B. Reinforcing: To be laterally reinforced to prevent sag.

C. Immediate Hood Supports: Furnish where door width exceeds 12'-0" (3659 mm).

2.06 Locking

- A. Hand Chain Lock:** Locking bracket, mounted on guide angle, suitable for padlocking (padlock to be provided by others).
- B. Test/Reset Handle Lock:** Locking bracket, mounted on release handle, suitable for padlocking (padlock to be provided by others), to prevent unauthorized fire door drop testing.

2.07 Finish

- A. Galvanized Surfaces:** Slats and hood (etc.) galvanized. Baked-on gray or tan coat of epoxy-modified polyester on slats and hood. Shop coat of rust-inhibiting metallic primer on all remaining ungalvanized surfaces, except bearings.
- B. Ungalvanized Surfaces:** Shall consist of a shop coat of rust-inhibiting metallic primer (gray) (brown) on exposed ferrous surfaces, except bearings.

PART 3 EXECUTION

1.01 Examination

- A.** Verify that dimensions are correct and project conditions are suitable for installation. Do not proceed with installation until unsatisfactory conditions have been corrected.

1.02 Installation

- A. Installation:** To be by an authorized Atlas Door representative and in accordance with Atlas Door standards and instructions.
- B. Compliance:** Installation to be in compliance with the latest NFPA 80.
- C. Testing:** Doors to be drop-tested and witnessed for normal operation after installation.
- D. Maintenance:** Per NFPA 80: All horizontal or vertical sliding and coiling fire doors shall be inspected and tested annually to check for proper operation and full closure. Resetting of the release mechanism shall be done in accordance with the manufacturer's instructions. A written record shall be maintained and be made available to the authority having jurisdiction.
- E.** Submit manufacturer's product data and installation instructions for each type of coiling door. Include both published data and any specific data prepared for this project.

Note to Specifiers... Please see end of this section for frequently specified Optional Features.

COILING FIRE DOOR-MODEL F22

08330/ATL
Buyline 0371

• FIRESET 3

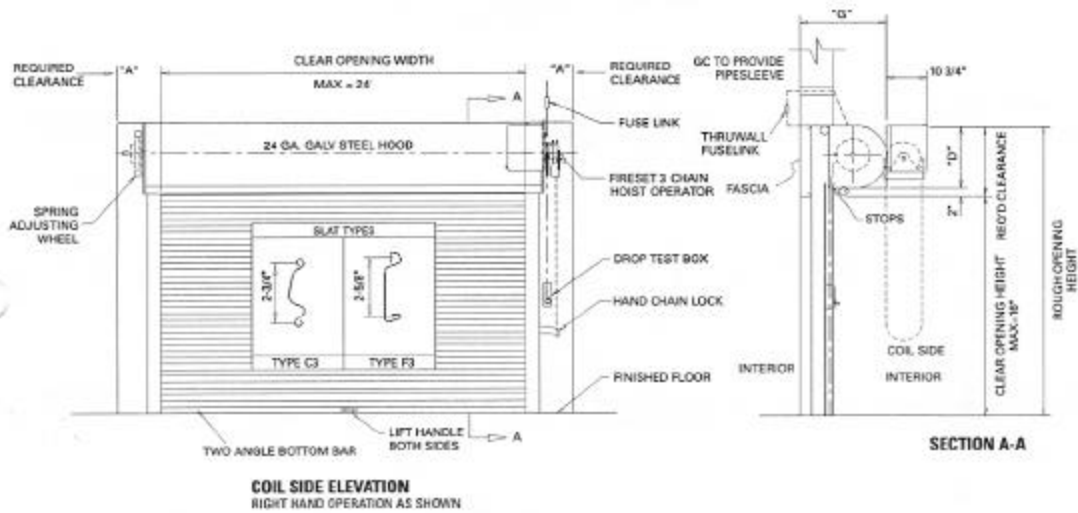
Modifications allow for door to be tested at the flip of a lever

- Hand Chain Operated
- Between Wall Mount

*Suffix letters indicate material and/or finish of curtain.

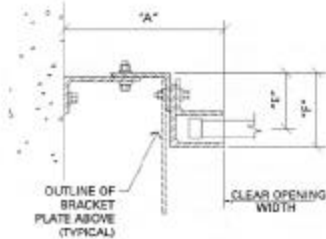
For alternate material or finish of curtain see Optional Features.

- GS Galvanized, not prime painted
- PS Galvanized with baked-on finish coat
- ST Stainless Steel



SECTION A-A

GUIDE DETAIL



Where clearances are critical, dimensions shown can be reduced. Consult Technical Services.

atlas door™