

COILING GRILLE—MODEL G11MA

08330/ATL
Buyline 0371

SPECIFICATIONS

PART 1 GENERAL

1.01 Section Includes

- A. Type:** Coiling Grilles are to be Atlas Door™ Model G11MA as manufactured by Clopay Building Products Company, Inc.
- B. Operation:** To be manual push-up.
- C. Mounting:** To be interior face mounted on a prepared opening or "free standing" on structural tubes provided by Atlas Door.

1.02 Related Work

- A. Opening preparation, miscellaneous or structural steel, access panels, finish or field painting** are in the scope of the work of other sections or trades.
- B. Submit manufacturer's product data and installation instructions** for each type of coiling door. Include both published data and any specific data prepared for this project.

1.03 Single-Source Responsibility

- A. Provide doors, guides, motors, and accessories** from one manufacturer for each type of door. Provide secondary components from source acceptable to manufacturer of primary components.

PART 2 PRODUCT

2.01 Curtain

- A. Curtain:** Is made from continuous horizontal cores spaced 2" (50.8 mm) on center, covered with aluminum spacer tubes and connected by aluminum vertical links.
- B. Endlinks:** To be furnished of a design to retain curtain in side guides.
- C. Bottom Bar:** Curtain to be reinforced with an extruded aluminum tube, reinforced for wider openings.

2.02 Spring Counterbalance

- A. Counterbalance:** Housed in a steel pipe of diameter and wall thickness to restrict maximum deflection to .03" per foot (2.5 mm/m) of grille width.
- B. Springs:** To be helical torsion type designed to include an overload factor of 25% and for optimum ease of operation. Springs are to be grease-packed and are to be mounted on a cold rolled steel inner shaft.
- C. Spring Tension:** Adjustable from outside of end bracket plate.
- D. Ball Bearing:** Sealed, to minimize wear of pipe shaft rotation around inner shaft.

2.03 Bracket Plates

- A. Bracket Plates:** Carrying pipe counterbalancing shaft are to be no less than 1/8" (6.35 mm) thickness and to house ends of grille coil. Shape of plates to be square.
- B. Drive End Bracket Plate:** Fitted with a sealed ball bearing.

2.04 Guide and Wall Angle Assembly

- A. Guides:** To be extruded aluminum fitted with plastic insert for sound deadening and ease of operation.
- B. Extrusion:** To be designed to retain special end links of curtain.
- C. Wall Angles:** Structural steel angles of 1/2" (4.76 mm) minimum thickness.

2.05 Hoods

- A. Hoods:** To house coil are to be fabricated of #24 U.S. Gauge galvanized steel.
- B. Reinforcing:** To be laterally reinforced to prevent sag.
- C. Intermediate Hood Supports:** Furnish where grille width exceeds 16'-0" (4877mm).

2.06 Locking

- A. Slide Bolts:** On bottom bar suitable for padlocking (padlocks by others).

2.07 Finish

- A. Aluminum Surfaces:** To have a mill finish.
- B. Ungalvanized Surfaces:** To consist of a shop coat of rust-inhibiting metallic primer on exposed ferrous surfaces, except bearings.

PART 3 EXECUTION

3.01 Examination

- A. Verify that dimensions are correct and project conditions are suitable** for installation. Do not proceed with installation until unsatisfactory conditions have been corrected.

3.02 Installation

- A. Installation:** To be by an authorized Atlas Door representative and in accordance with Atlas Door standards and instructions.
- B. Submit manufacturer's product data and installation instructions** for each type of coiling door. Include both published data and any specific data prepared for this project.
- Note to Specifiers...** Please see end of this section for frequently specified Optional Features.

| Opening Height | "D" | "G" | "E" | Opening Width | "A" | "B" |
|---|----------------------------|---------------------|---------------------|---------------------------|----------------------------|------------------|
| to 5'-4 1/2" (1638 mm) | 15" (381 mm) | 15 1/2" (394 mm) | 2 1/2" (63.5 mm) | to 34'-0" (10363 mm) | 7 1/2" (190.5 mm) | 7" (177.8 mm) |
| 5'-4 1/2" to 8'-7 1/2" (1641 mm) (2635 mm) | 16" (406 mm) | 16 1/2" (419 mm) | 3" (76.2 mm) | over 34'-0" (10363 mm) | Consult Technical Services | |
| 8'-7 1/2" to 10'-5" (2638 mm) (3175 mm) | 17" (432 mm) | 17 1/2" (445 mm) | 3 1/2" (88.9 mm) | | | |
| 10'-5 1/2" to 12'-3 1/2" (3178 mm) (3753 mm) | 18" (457 mm) | 18 1/2" (470 mm) | 4" (102 mm) | | | |
| 12'-3 1/2" to 16'-4 1/2" (3756 mm) (4985 mm) | 19" (483 mm) | 19 1/2" (495 mm) | 4 1/2" (114 mm) | | | |
| over 16'-4 1/2" (4985 mm) | Consult Technical Services | | | | | |

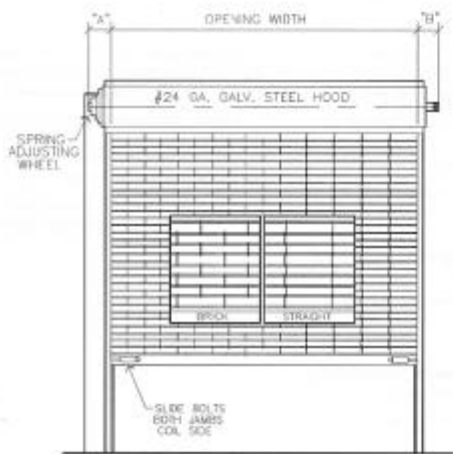
COILING GRILLE-MODEL G11*

08330/ATL
Buyline 0371

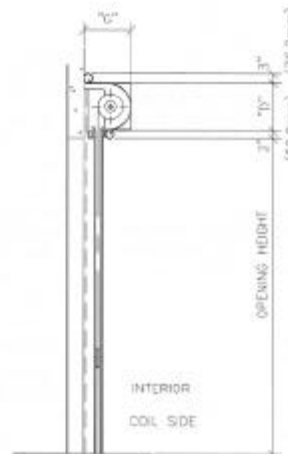
- Manually operated
- Interior face mounted

*Suffix letters indicate material and/or finish of curtain.

- MA Mill finish aluminum
- AA Clear anodized aluminum
- DA Bronze duranodic aluminum
- ST Stainless steel
- CV Clear-Vue plastic
- DV Duranodic-Vue plastic



COIL SIDE ELEVATION
RIGHT HAND OPERATION AS SHOWN
LEFT HAND OPERATION IS OPPOSITE AS SHOWN

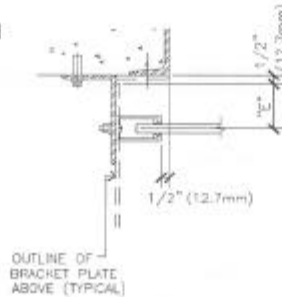


SECTION

Maximum size recommended is 18'-0"
(5486 mm) wide or 11'-0" (3355 mm)
high.

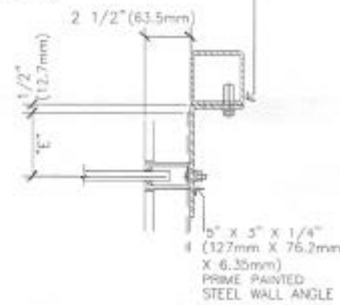
3" (76.2 mm) is dimension of top hood
bead. Where headroom is limited 3"
(76.2 mm) requirement can be
eliminated by turning bead down.

Where clearances are critical,
dimensions shown can be reduced.
Consult Technical Services.



OUTLINE OF
BRACKET PLATE
ABOVE (TYPICAL)

GUIDE DETAILS



ALTERNATE INSTALLATION FOR
"FREE STANDING GRILLE". SIZE
OF STRUCTURAL STEEL TUBES
WILL VARY WITH ROLLING
GRILLE SIZE.

atlas door