

COILING GRILLE—MODEL G21MA

08330/ATL
Buyline 0371

SPECIFICATIONS

PART 1 GENERAL

1.01 Section Includes

- A. Type:** Coiling Grilles are to be Atlas Door™ Model G21MA as manufactured by Clopay Building Products Company, Inc.
- B. Operation:** To be chain hoist operated using gear reduction and galvanized hand chain.
- C. Mounting:** To be interior face mounted on a prepared opening or "free standing" on structural tubes provided by Atlas Door.

1.02 Related Work

- A.** Opening preparation, miscellaneous or structural steel, access panels, finish or field painting are in the scope of the work of other sections or trades.
- B.** Submit manufacturer's product data and installation instructions for each type of coiling door. Include both published data and any specific data prepared for this project.

1.03 Single-Source Responsibility

- A.** Provide doors, guides, motors, and accessories from one manufacturer for each type of door. Provide secondary components from source acceptable to manufacturer of primary components.

PART 2 PRODUCT

2.01 Curtain

- A. Curtain:** Is made from continuous horizontal cores spaced 2" (50.8 mm) on center, covered with aluminum spacer tubes and connected by aluminum vertical links.
- B. Endlinks:** To be furnished of a design to retain curtain in side guides.
- C. Bottom Bar:** Curtain to be reinforced with an extruded aluminum tube, reinforced for wider openings.

2.02 Spring Counterbalance

- A. Counterbalance:** Housed in a steel pipe of diameter and wall thickness to restrict maximum deflection to .03" per foot (2.5 mm/m) of grille width.
- B. Springs:** To be helical torsion type designed to include an overload factor of 25% and for optimum ease of operation. Springs are to be grease-packed and are to be mounted on a cold rolled steel inner shaft.
- C. Hand Chain:** Pull not to exceed 35 lbs. (156N).
- D. Spring Tension:** Adjustable from outside of end bracket plate.
- E. Ball Bearing:** Sealed, to minimize wear of pipe shaft rotation around inner shaft.

2.03 Bracket Plates

- A. Bracket Plates:** Carrying pipe counterbalancing shaft are to be no less than 1/4" (6.35 mm) thickness and to house ends of grille coil. Shape of plates to be square.
- B. Drive End Bracket Plate:** Fitted with a sealed ball bearing.

2.04 Guide and Wall Angle Assembly

- A. Guides:** To be extruded aluminum fitted with plastic insert for sound deadening and ease of operation.
- B. Extrusion:** To be designed to retain special end links of curtain.
- C. Wall Angles:** Structural steel angles of 3/8" (4.76 mm) minimum thickness.

2.05 Hoods

- A. Hoods:** To house coil are to be fabricated of #24 U.S. Gauge galvanized steel.
- B. Reinforcing:** To be laterally reinforced to prevent sag.
- C. Intermediate Hood Supports:** Furnish where grille width exceeds 16'-0" (4877 mm).

2.06 Locking

- A. Hand Chain Lock:** Locking bracket, mounted on guide, suitable for padlocking (padlock by others).

2.07 Finish

- A. Aluminum Surfaces:** To have a mill finish.
- B. Ungalvanized Surfaces:** To consist of a shop coat of rust-inhibiting metallic primer on exposed ferrous surfaces, except bearings.

PART 3 EXECUTION

3.01 Examination

- A.** Verify that dimensions are correct and project conditions are suitable for installation. Do not proceed with installation until unsatisfactory conditions have been corrected.

3.02 Installation

- A. Installation:** To be by an authorized Atlas Door representative and in accordance with Atlas Door standards and instructions.
- B.** Submit manufacturer's product data and installation instructions for each type of coiling door. Include both published data and any specific data prepared for this project.
- Note to Specifiers...** Please see end of this section for frequently specified Optional Features.

Opening Height	"D"	"G"	"E"	Opening Width	"A"	"B"
to 5'-4 1/2" (1638 mm)	15" (381 mm)	15 1/2" (394 mm)	2 1/2" (63.5 mm)	to 34'-0" (10363 mm)	7 1/2" (190.5 mm)	7" (177.8 mm)
5'-4 1/2" to 8'-7 1/2" (1641 mm) (2635 mm)	16" (406 mm)	16 1/2" (419 mm)	3" (76.2 mm)	over 34'-0" (10363 mm)	Consult Technical Services	
8'-7 1/2" to 10'-5" (2638 mm) (3175 mm)	17" (432 mm)	17 1/2" (445 mm)	3 1/2" (88.9 mm)			
10'-5 1/2" to 12'-3 1/2" (3178 mm) (3753 mm)	18" (457 mm)	18 1/2" (470 mm)	4" (102 mm)			
12'-3 1/2" to 16'-4 1/2" (3756 mm) (4965 mm)	19" (483 mm)	19 1/2" (495 mm)	4 1/2" (114 mm)			
over 16'-4 1/2" (4965 mm)	Consult Technical Services					

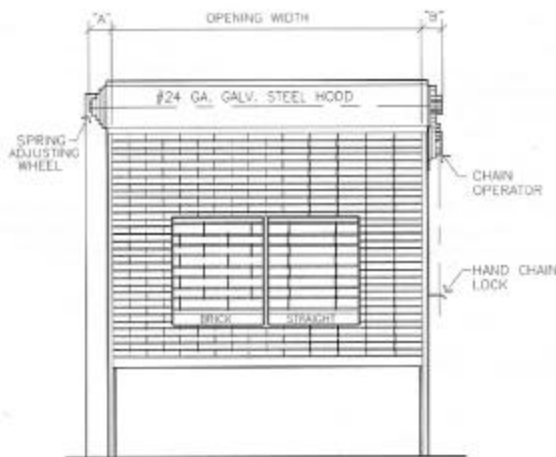
COILING GRILLE-MODEL G21*

08330/ATL
Buyline 0371

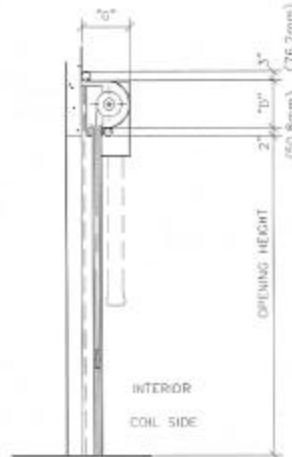
- Hand chain operated
- Interior face mounted

*Suffix letters indicate material and/or finish of curtain.

- MA Mill finish aluminum
- AA Clear anodized aluminum
- DA Bronze duranodic aluminum
- ST Stainless steel
- CV Clear-Vue plastic
- DV Duranodic-Vue plastic



COIL SIDE ELEVATION
RIGHT HAND OPERATION AS SHOWN
LEFT HAND OPERATION IS OPPOSITE AS SHOWN



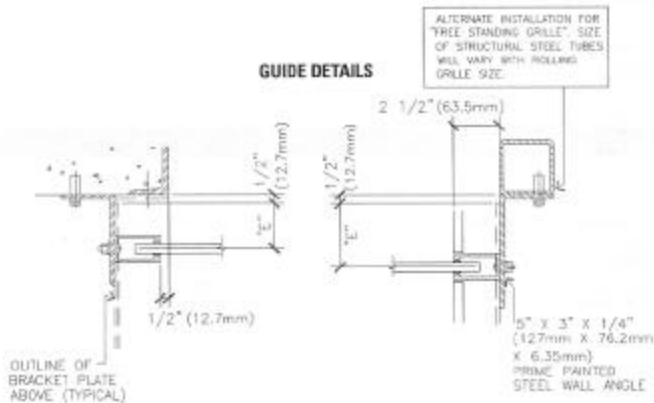
SECTION

Architect note: Please observe location of chain operator in relation to finished wall. Do not enclose or obstruct access to chain.

3" (76.2 mm) is dimension of top hood bead. Where headroom is limited 3" (76.2 mm) requirement can be eliminated by turning bead down.

Where clearances are critical, dimensions shown can be reduced. Consult Technical Services.

GUIDE DETAILS



atlas door™