

# COILING GRILLE—MODEL G32MA

08330/ATL  
Buyline 0371

## SPECIFICATIONS

### PART 1 GENERAL

#### 1.01 Section Includes

**A. Type:** Coiling Grilles are to be Atlas Door™ Model G32MA as manufactured by Copay Building Products Company, Inc.

**B. Operation:** To be awning crank hoist using gears and removable crank handle.

**C. Mounting:** To be interior mounted between jambs in a prepared opening or "free standing" on structural tubes provided by Atlas Door.

#### 1.02 Related Work

**A.** Opening preparation, miscellaneous or structural steel, access panels, finish or field painting are in the scope of the work of other sections or trades.

**B.** Submit manufacturer's product data and installation instructions for each type of coiling door. Include both published data and any specific data prepared for this project.

#### 1.03 Single-Source Responsibility

**A.** Provide doors, guides, motors, and accessories from one manufacturer for each type of door. Provide secondary components from source acceptable to manufacturer of primary components.

### PART 2 PRODUCT

#### 2.01 Curtain

**A. Curtain:** Is made from continuous horizontal cores spaced 2" (5.08 mm) on center, covered with aluminum spacer tubes and connected by aluminum vertical links.

**B. Endlinks:** To be furnished of a design to retain curtain in side guides.

**C. Bottom Bar:** Curtain to be reinforced with an extruded aluminum tube, reinforced for wider openings.

#### 2.02 Spring Counterbalance

**A. Counterbalance:** Housed in a steel pipe of diameter and wall thickness to restrict maximum deflection to .03" per foot (2.5 mm/m) of grille width.

**B. Springs:** To be helical torsion type designed to include an overload factor of 25% and for optimum ease of operation. Springs are to be grease-packed and are to be mounted on a cold rolled steel inner shaft.

**C. Spring Tension:** Adjustable from outside of end bracket plate.

**D. Ball Bearing:** Sealed, to minimize wear of pipe shaft rotation around inner shaft.

#### 2.03 Bracket Plates

**A. Bracket Plates:** Carrying pipe counterbalancing shaft are to be no less than 1/4" (6.35 mm) thickness and to house ends of grille coil. Shape of plates to be square.

**B. Drive End Bracket Plate:** Fitted with a sealed ball bearing.

#### 2.04 Guide and Wall Angle Assembly

**A. Guides:** To be extruded aluminum fitted with plastic insert for sound deadening and ease of operation.

**B. Extrusion:** To be designed to retain special end links of curtain.

**C. Wall Angles:** Structural steel angles of 1/4" (4.75 mm) minimum thickness.

#### 2.05 Hoods

**A. Hoods:** Are not furnished on above ceiling installations since access to curtain and shaft is necessary. Provide access panels in ceiling at adjusting and operating sides.

#### 2.06 Locking

**A. Integral Gearing:** Of crank operator and removal of crank handle to provide locking for grille.

#### 2.07 Finish

**A. Aluminium Surfaces:** To have a mill finish.

**B. Ungalvanized Surfaces:** To consist of a shop coat of rust-inhibiting metallic primer on exposed ferrous surfaces, except bearings.

### PART 3 EXECUTION

#### 3.01 Examination

**A.** Verify that dimensions are correct and project conditions are suitable for installation. Do not proceed with installation until unsatisfactory conditions have been corrected.

#### 3.02 Installation

**A. Installation:** To be by an authorized Atlas Door representative and in accordance with Atlas Door standards and instructions.

**B.** Submit manufacturer's product data and installation instructions for each type of coiling door. Include both published data and any specific data prepared for this project.

**Note to Specifiers...** Please see end of this section for frequently specified Optional Features.

Clear Opening Height	Clear Opening Width	
	"D"	"E"
to 5'-4 1/2" (1638 mm)	13" (381 mm)	2 1/2" (63.5 mm)
5'-4 1/2" to 8'-7 1/2" (1641 mm) (2635 mm)	18" (405 mm)	3" (76.2 mm)
8'-7 1/2" to 10'-5" (2638 mm) (3175 mm)	17" (432 mm)	3 1/2" (88.9 mm)
10'-5 1/2" to 12'-3 1/2" (3178 mm) (3753 mm)	18" (457 mm)	4" (102 mm)
12'-3 1/2" to 15'-4 1/2" (3756 mm) (4985 mm)	19" (483 mm)	4 1/2" (114 mm)
over 15'-4 1/2" (4985 mm)	Consult Technical Services	

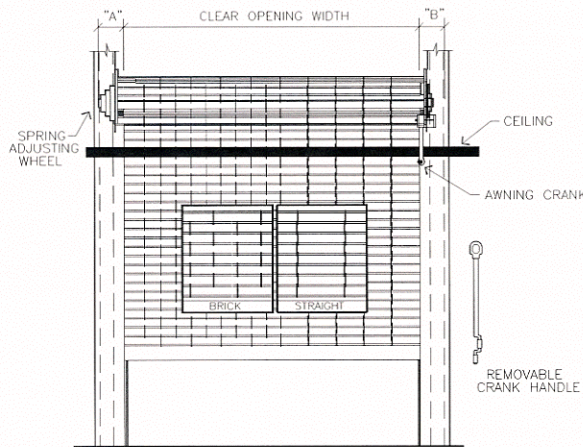
# COILING GRILLE-MODEL G32\*

08330/ATL  
Buyline 0371

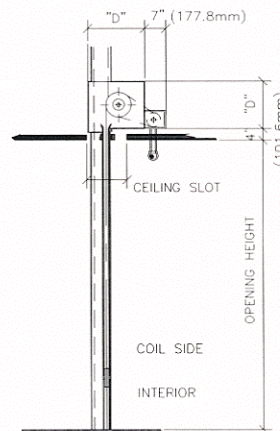
- Awning crank operated
- Interior between jamb mounted

\*Suffix letters indicate material and/or finish of curtain.

- MA Mill finish aluminum
- AA Clear anodized aluminum
- DA Bronze duranodic aluminum
- ST Stainless steel
- CV Clear-Vue plastic
- DV Duranodic-Vue plastic



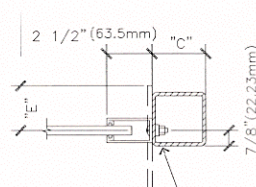
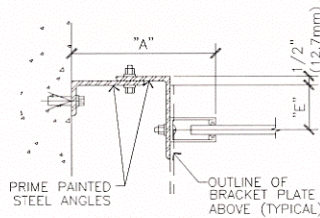
**COIL SIDE ELEVATION**  
RIGHT HAND OPERATION AS SHOWN  
LEFT HAND OPERATION IS OPPOSITE AS SHOWN



**SECTION**

Where clearances are critical, dimensions shown can be reduced. Consult Technical Services.

**GUIDE DETAILS**



ALTERNATE INSTALLATION FOR "FREE STANDING GRILLE". SIZE OF STRUCTURAL STEEL TUBES WILL VARY WITH ROLLING GRILLE SIZE.

