

# SIDE COILING DOOR-MODEL H41GS

08330/ATL  
Buyline 0371

## SPECIFICATIONS

### PART 1 GENERAL

#### 1.01 Section Includes

**A. Type:** Side Coiling Doors are to be Atlas Door™ Model H41GS as manufactured by Clopay Building Products Company, Inc.

**B. Operation:** To be motor operated using high starting torque motor, reduction gearing, limit switches for open and closed limits of door travel, emergency hand crank with electrical interlock to break motor circuit when hand crank is engaged, magnetic relay contactor, prewired to terminal block and three-button-station. Motor is removable without affecting emergency operation or limit switches. Manufacturer is to furnish wiring diagram.

**NOTE:** For additional motor operator components and controls refer to the coiling, motor operators tab.

**C. Mounting:** To be top-hung from structural steel prepared for all thread hangers (by General Contractor).

#### 1.02 Related Work

**A.** Opening preparation, track supports, floor chase or pit for bottom track and coil box, miscellaneous or structural steel, coil box enclosure, access panels, finish or field painting, electrical wires, wiring, disconnect switches, and conduit are in the scope of work of other sections or trades.

**B.** Submit manufacturer's product data and installation instructions for each type of coiling door. Include both published data and any specific data prepared for this project.

#### 1.03 Single-Source Responsibility

**A.** Provide doors, tracks, motors, and accessories from one manufacturer for each type of door. Provide secondary components from source acceptable to manufacturer of primary components.

### PART 2 PRODUCT

#### 2.01 Curtain

**A. Slats:** Cold rolled in continuous lengths of galvanized steel interlocked to form curtains. Slats must be "flat" profile type.

**B. Endlocks:** Each end of alternate slats to be fitted with endlocks to maintain slat alignment and to allow connection to top and bottom drive bands.

**C. Gauge:** Thickness of slat material to be as required by width and height of opening.

**D. Galvanizing:** Zinc-coated in accordance with ASTM A653.

**E. Lead Stile:** Curtain to be reinforced with a lead stile at the leading edge.

**F. Top and Bottom Bands:** Curtain is to include stainless steel drive bands top and bottom. Top band to contain double ball bearing roller carriers designed to travel in top track. Bottom band to travel in bottom track. Bands to engage positive drive type shaft forming rack and pinion drive system. No top or bottom cables required.

#### 2.02 Spring Counterbalance

**A. Counterbalance:** Housed in a steel pipe.

**B. Springs:** To be helical torsion type designed to include an overload factor of 25% and for optimum ease of operation. Springs are grease-packed and are to be mounted on a cold rolled steel inner shaft.

**C. Spring Tension:** To be calibrated and pre-set at factory.

**D. Ball Bearings:** Sealed, to minimize wear.

#### 2.03 Coil Box

**A. Bracket Plates:** Carrying pipe counterbalancing shaft and cog drive shaft are to be no less than 1/2" (6.35 mm) thickness and to house ends of door coil.

**B. Drive End Bracket Plate:** Fitted with a sealed ball bearing for both spring counterbalance and drive shaft.

**C. Coil Box:** To be constructed of structural steel angles and to contain spring counterbalance shaft and positive engagement type drive shaft. Structural steel bracket plates top and bottom shall form ends of coil box. Bottom plate shall have leveling bolt in each corner. Coil box enclosures are not included in this section.

#### 2.04 Tracks

**A. Top Track:** To be constructed of steel shapes with extruded bronze angles to be used as combination carrier guides and band wear surface.

**B. Bottom Track:** To be constructed of structural angles, leveler bars and full length removable wear plates. (Bottom track can be omitted if door has no curves. A removable floor guide spaced approx. 8'-0" (2438 mm) will be provided.)

**C. Curves:** Track can be designed to follow any lease line. The minimum radius of the curved track is 12" (304.80 mm) to the center of the track.

**D. Pit in Floor:** Bottom track and coil box to fit into a 6" (152.40 mm) deep floor pit.

#### 2.05 Locking

**A. Integral Gearing:** Of motor operator and positive drive system to provide locking of door.

#### 2.06 Finish

**A. Ungalvanized Surfaces:** To consist of a shop coat of rust inhibiting metallic primer on exposed surfaces, except bearings.

**B. Aluminum Surfaces:** To be mill finish.

**C. Stainless Steel Surfaces:** To be #4 finish.

**D. Wood Surfaces:** To be unfinished with finishing included elsewhere in the specifications.

### PART 3 EXECUTION

#### 3.01 Examination

**A.** Verify that dimensions are correct and project conditions are suitable for installation. Do not proceed with installation until unsatisfactory conditions have been corrected.

#### 3.02 Installation

**A. Installation:** To be by an authorized Atlas Door representative and in accordance with Atlas Door standards and instructions.

**B. General Contractor:** Will be responsible for structural steel supports, floor chases, unloading and erection of coil box and coil box enclosure.

**C.** Submit manufacturer's product data and installation instructions for each type of coiling door. Include both published data and any specific data prepared for this project.

**Note To Specifiers...** Please see end of this section for frequently specified Optional Features.

Opening Width	"A"	"B"	"C"	"D"
to 16'-0" (4877 mm)	29" (737 mm)	31" (787 mm)	22" (559 mm)	24" (610 mm)
16'-1/4" to 22'-0" (4890 mm) (6706 mm)	31" (787 mm)	33" (838 mm)	24" (610 mm)	26" (660 mm)
22'-1/4" to 29'-0" (6709 mm) (8839 mm)	33" (838 mm)	35" (889 mm)	26" (660 mm)	28" (711 mm)
29'-1/4" to 36'-0" (8842 mm) (10,973 mm)	35" (889 mm)	37" (940 mm)	28" (711 mm)	30" (762 mm)
over 36'-0" (10,973 mm)	Consult Technical Services		Consult Technical Services	

Side coiling doors without curves can be furnished without floor track. Removable segments of track 5' (127 mm) long spaced approximately 8'-0" (2438 mm) apart are furnished for insertion into floor sleeves.

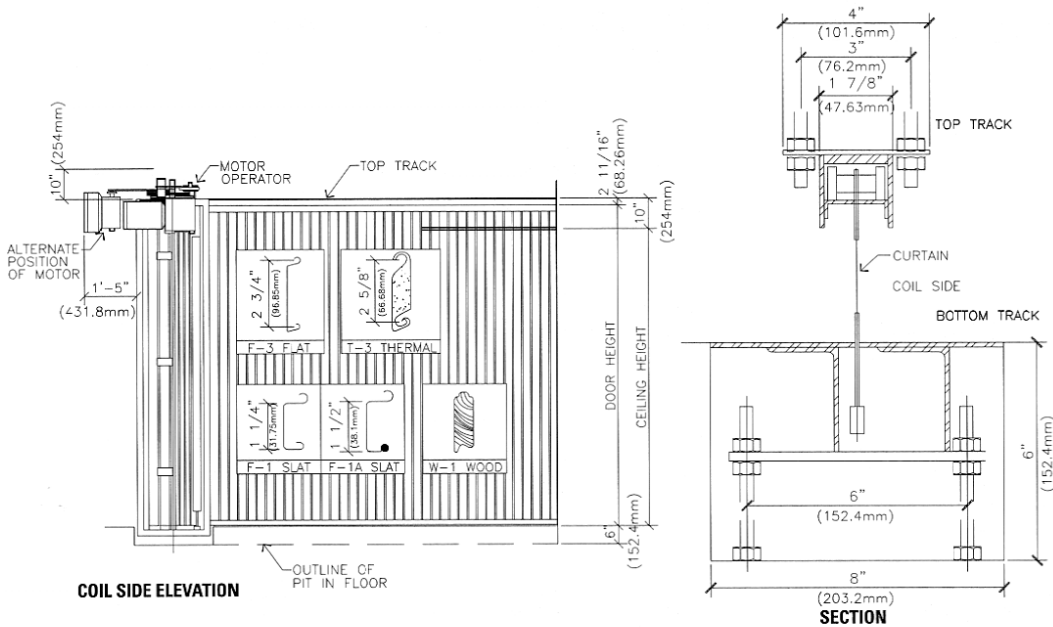
# SIDE COILING DOOR-MODEL H41\*

08330/ATL  
Buyline 0371

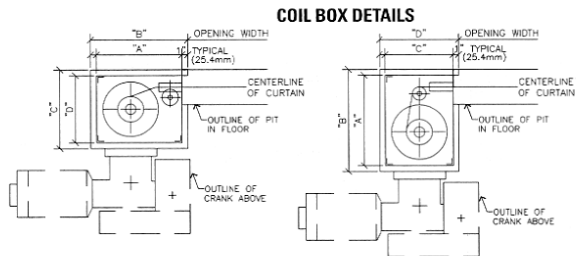
- Motor operated
- Emergency crank
- Bottom track

\*Suffix letters indicate material and/or finish of curtain.

- GS Galvanized, without baked-on finish coat
- PS Galvanized with baked-on finish coat
- MA Mill finish aluminum
- AA Clear anodized aluminum
- DA Bronze duranodic aluminum
- ST Stainless steel
- WW Unfinished wood



Where clearances are critical, dimensions shown can be reduced. Consult Technical Services.



**atlas door™**