

# MOTOR OPERATOR—MODEL HF\*\*

08330/ATL  
Buyline 0371

## SPECIFICATIONS

### PART 1 GENERAL

#### 1.01 Section Includes

**A. Type:** The motor operator will be Atlas Door™ Model HF\*\* (see chart) as manufactured by Copay Building Products Company, Inc.

**B. Mounting:** To be vertical front of hood.

#### 1.02 Related Work

**A.** Electrical wires, wiring, disconnect switches, and conduit are in the scope of work of other sections or trades.

**B.** Submit manufacturer's product data and installation instructions for each type of coiling door. Include both published data and any specific data prepared for this project.

#### 1.03 Single Source Responsibility:

**A.** Provide doors, guides, motors and accessories from one manufacturer for each type of door. Provide secondary components from source acceptable to manufacturer of primary components.

### PART 2 PRODUCT

#### 2.01 Operator

**A. Motor:** Provide high torque, continuous duty motor of horsepower determined by size and weight of coiling product (see chart). Motor shall be separate from reduction mechanism for ease of maintenance. (Specify voltage & phase available.)

**B. Reduction:** To be V-belt drive from motor to full oil impregnated bushing power train with additional reduction by chain and sprockets. All power train shafts shall be minimum 1/2" (19.05 mm) diameter.

**C. Drive:** Product shaft to be driven by roller chain to provide travel of 8" (152.4 mm) to 12" (304 mm) per second.

**D. Clutch:** To be adjustable friction type.

**E. Electrical Enclosure:** All electrical components shall be in a NEMA 1 enclosure and pre-wired to terminal block.

**F. Reversing Contactor:** Heavy-duty across the line reversing type with mechanical interlock. Size "00".

**G. Limit Switches:** To be positive chain drive screw type limit switch, enclosed in electrical control box, easily accessible for precision setting. Limit switches will remain in time when emergency chain hoist is used to operate manually.

**H. Control Circuit:** Shall be reduced to 24 volts for safety.

**I. Overload Protection:** To be thermal type with automatic reset.

**J. Emergency Operation:** To be by a floor operated chain hoist which must be engaged for manual mechanical operation. An electrical interlock disconnects power to the motor operator when chain hoist is engaged.

**K. Control Station:** To be one NEMA 1 Three-button-station with open, close and stop functions. Momentary contact to open and stop, constant pressure to close.

**L. Assembly:** To be C.S.A. and UL listed.

### PART 3 EXECUTION

#### 3.01 Installation

**A. Installation:** To be by an authorized Atlas Door representative and in accordance with Atlas Door standards and instructions.

**B.** Submit manufacturer's product data and installation instructions for each type of coiling door. Include both published data and any specific data prepared for this project.

**NOTE TO SPECIFIERS...** Please see end of this section for frequently specified Optional Features.

### AMPERAGE & HORSEPOWER DATA

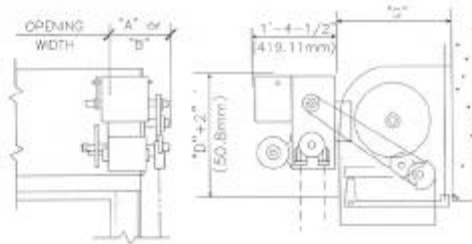
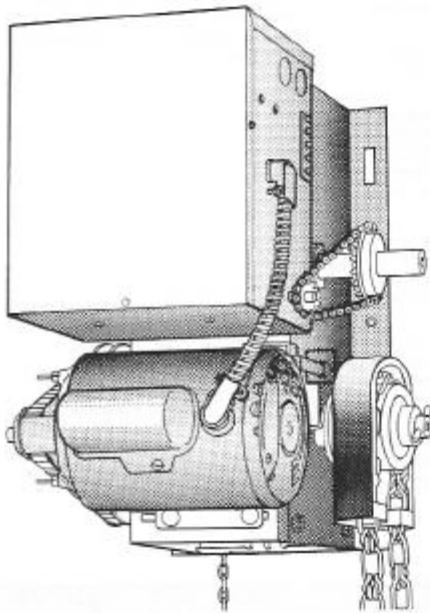
Max. Sq. Ft./Meter Area Motor Model	Fire Doors	HP	Voltage	Phase	AMP
HO-50	200' 18.58 m <sup>2</sup>	1/2	115	1	0.2
			230	1	4.1
			208-120	3	2.1
			460	3	1.05
			575	3	.77
HO-75	330' 27.87 m <sup>2</sup>	1/2	115	1	13.0
			230	1	6.5
			208-120	3	3.6
			460	3	1.8
			575	3	1.05

# MOTOR OPERATOR—MODEL HF<sup>\*\*</sup>

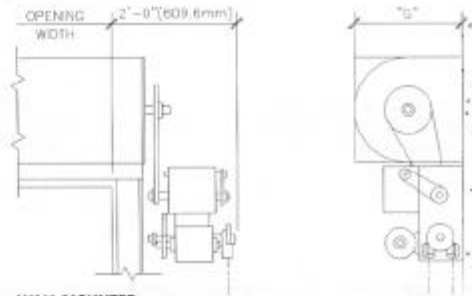
08330/ATL  
Buyline 0371

- ½ H.P. and ¾ H.P.
- Emergency Hand Chain

Used on:  
Fire Doors - "F" Series  
<sup>\*\*</sup>Suffix indicates Horsepower required - see chart on back.



VERTICAL FRONT OF HOOD



WALL MOUNTED

**atlas door™**