

# LABELED COUNTER SHUTTER, SMOKE-MODEL J12PS

08330/ATL  
Buyline 0371

## SPECIFICATIONS

### PART 1 GENERAL

#### 1.01 Section Includes

- A. Type:** Labeled Counter Smoke Shutters are to be Atlas Door™ Model J12PS as manufactured by Clopay Building Products Company, Inc.
- B. Operation:** To be manual push-up.
- C. Mounting:** To be interior mounted between jambs and under lintel in a prepared opening.
- D. Approval:** Doors to be tested by an independent Testing Laboratory in accordance with ASTM E152 and approved for 1-1/2 hour rating (without a glass light and 1/2 hour rating with a glass light).
- E. Automatic Closing:** Triggering of automatic closing mechanism by melting of fusible link at 165°F (74°C).

#### 1.02 Related Work

- A. Opening preparation,** counter top, miscellaneous or structural steel, access panels, finish or field painting are in the scope of the work of other sections or trades.
- B. Submit manufacturer's product data and installation instructions** for each type of coiling door. Include both published data and any specific data prepared for this project.

#### 1.03 Single-Source Responsibility

- A. Provide doors, guides, motors, and accessories** from one manufacturer for each type of door. Provide secondary components from source acceptable to manufacturer of primary components.

### PART 2 PRODUCT

#### 2.01 Curtain

- A. Slats:** Cold roll-formed in continuous lengths of galvanized steel, midget slat style F1, interlocked to form curtains.

- B. Endlocks:** Each end of alternate slats to be fitted with endlocks to act as a wearing surface in the guides to maintain slat alignment, and to prevent flame passage.
- C. Gauge:** Thickness of slat to satisfy testing requirements.
- D. Galvanizing:** Zinc-coated in accordance with ASTM A653.
- E. Bottom Bar:** Curtain to be reinforced with bottom bar with lift handles and smoke seal as per approved details.

#### 2.02 Spring Counterbalance

- A. Counterbalance:** Housed in a steel pipe of diameter and wall thickness to restrict maximum deflection to .03" per foot (2.5 mm/m) of shutter width.
- B. Springs:** Designed to be helical torsion type designed to include an overload factor of 25% and for optimum ease of operation. Springs are to be grease-packed and are to be mounted on a cold rolled steel inner shaft.
- C. Spring Tension:** Adjustable from outside of end bracket plate.
- D. Ball Bearing:** Sealed, to minimize wear of pipe shaft rotation around inner shaft.

#### 2.03 Bracket Plates

- A. Bracket Plates:** Carrying pipe counter-balancing shaft are to be no less than 1/8" (3.18 mm) and to house ends of shutter coil.
- B. Drive End Bracket Plate:** Fitted with a sealed ball bearing.
- C. Governor:** When size requires, shutter to be equipped with an oscillating governor to control speed of descent (smaller sizes do not require a governor).

#### 2.04 Guide Assembly

- A. Guide:** Of steel constructed in accordance with approved details.
- B. Smoke Seals:** At each guide as per approved details.

#### 2.05 Hoods

- A. Hoods:** To house coil are to be rectangular and fabricated of #24 U.S. Gauge galvanized steel.

- B. Fascia:** Provide galvanized closure as required.

#### 2.06 Locking

- A. Slide Belts:** On bottom bar suitable for padlocking (padlocks by others).

#### 2.07 Finish

- A. Galvanized Surfaces:** To be baked-on coat of epoxy-modified polyester. Color: Gray
- B. Ungalvanized Surfaces:** To consist of a shop coat of rust-inhibiting metallic primer on exposed ferrous surfaces.

### PART 3 EXECUTION

#### 3.01 Examination

- A. Verify that dimensions are correct and project conditions are suitable for installation.** Do not proceed with installation until unsatisfactory conditions have been corrected.

#### 3.02 Installation

- A. Installation:** To be by an authorized Atlas Door representative and in accordance with Atlas Door standards and instructions.
  - B. Testing:** Doors to be drop-tested and witnessed for normal operation after installation.
  - C. Submit manufacturer's product data and installation instructions** for each type of coiling door. Include both published data and any specific data prepared for this project.
- Note to Specifiers...**Please see end of this section for frequently specified Optional Features.

## CLEAR OPENING WIDTH

CLEAR OPENING HEIGHT	CLEAR OPENING WIDTH											CONSULT TECHNICAL SERVICES
	1'-0" 304.8 mm	2'-0" 609.6 mm	3'-0" 914.4 mm	4'-0" 1219 mm	5'-0" 1524 mm	6'-0" 1829 mm	7'-0" 2134 mm	8'-0" 2438 mm	9'-0" 2743 mm	10'-0" 3048 mm	11'-0" 3353 mm	
0												"A" = 4'-58" (117.5 mm) "B" = 2'-58" (86.7 mm) "C" = 1'-0" (254.0 mm) "D" = 1'-1" (279.4 mm)
1'-0" 304.8 mm												
2'-0" 609.6 mm			"A" = 3'-78" (98.4 mm)	"B" = 1'-78" (47.6 mm)								
3'-0" 914.4 mm			"C" = 1'-0" (254.0 mm)	"D" = 1'-1" (279.4 mm)								
4'-0" 1219 mm												
5'-0" 1524 mm												
6'-0" 1829 mm	"A" = 3'-78" (98.4 mm)	"B" = 1'-78" (47.6 mm)										
7'-0" 2134 mm	"C" = 1'-0" (254.0 mm)	"D" = 1'-1" (279.4 mm)										

Shutter Size Within Shaded Area See Page CL-23

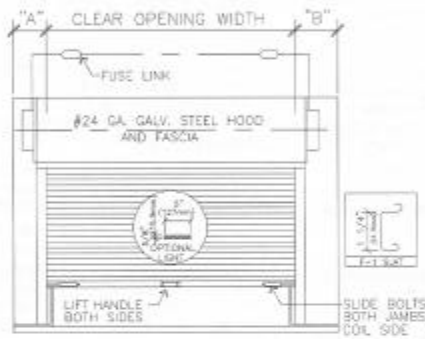
5'-2" High (1575 mm)

# LABELED COUNTER SMOKE SHUTTER-MODEL J12\*

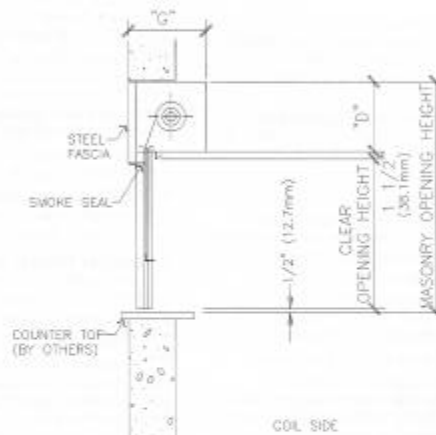
08330/ATL  
Buyline 0371

- Manually operated
- Interior between jamb mounted

\*Suffix letters indicate material and/or finish of curtain.  
PS Galvanized with baked-on finish coat  
ST Stainless steel



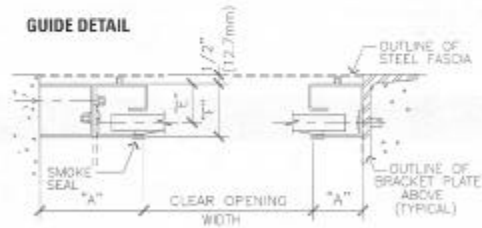
**COIL SIDE ELEVATION**  
RIGHT HAND OPERATION AS SHOWN  
LEFT HAND OPERATION IS OPPOSITE AS SHOWN



**SECTION**

Guides are required to be 1/2" (12.7 mm) above counter top (floor) to allow for heat expansion in case of fire. Shutter, however, will close to counter (floor).

Where clearances are critical, dimensions shown can be reduced. Consult Technical Services.



**atlas door™**