

LABELED COUNTER SHUTTER—MODEL L41PS

08330/ATL
Buyline 0371

SPECIFICATIONS

PART 1 GENERAL

1.01 Section Includes

A. Type: Labeled Counter Shutters are to be Atlas Door™ Model L41PS as manufactured by Clopay Building Products Company, Inc.
B. Operation: To be motor-operated using high starting torque motor, reduction gearing, limit switches for upper and lower limits of shutter travel, magnetic relay contactor, overload protection, pre-wiring to terminal block, and three-button-station. Motor is to be removable for repair without affecting emergency operation or limit switches. Manufacturer is to furnish wiring diagram.

NOTE: For additional motor operator components and controls refer to the coiling, motor operators tab.

C. Mounting: To be interior face mounted on a prepared opening.

D. Approval: Doors to be tested and approved by Underwriters' Laboratories, Inc. (Underwriters' Laboratories of Canada).

E. Label: To be furnished with UL (ULC) class A (3-our) rating and may also be installed in openings with a lower rating.

F. Automatic Closing: Triggering of automatic closing mechanism by melting of fusible link at 165°F (74°C).

1.02 Related Work

A. Opening preparation, counter top, miscellaneous or structural steel, access panels, finish or field painting, electrical wires, wiring, disconnect switches, conduit are in the scope of the work of other sections or trades.

B. Submit manufacturer's product data and installation instructions for each type of coiling door. Include both published data and any specific data prepared for this project.

1.03 Single-Source Responsibility

A. Provide doors, guides, motors, and accessories from one manufacturer for each type of door. Provide secondary components from source acceptable to manufacturer of primary components.

PART 2 PRODUCT

2.01 Curtain

A. Slats: Cold roll-formed in continuous lengths of galvanized steel, midjet slat style F1, interlocked to form curtains.

B. Endlocks: Each end of alternate slats to be fitted with endlocks to act as a wearing surface in the guides to maintain slat alignment, and to prevent flame passage.

C. Gauge: Thickness of slat to satisfy Underwriters' Laboratories (ULC) requirements.

D. Galvanizing: Zinc-coated in accordance with ASTM A653.

E. Bottom Bar: Curtain to be reinforced with bottom bar with lift handles.

2.02 Spring Counterbalance

A. Counterbalance: Housed in a steel pipe of diameter and wall thickness to restrict maximum deflection to (3" per foot (2.5 mm/m) of shutter width.

B. Springs: To be helical torsion type designed to include an overload factor of 25% and for optimum ease of operation. Springs are to be grease-packed and are to be mounted on a cold rolled steel inner shaft.

C. Spring Tension: Adjustable from outside of end bracket plate.

D. Ball Bearing: Sealed, to minimize wear of pipe shaft rotation around inner shaft.

2.03 Bracket Plates

A. Bracket Plates: Carrying pipe counterbalancing shaft are to be no less than 1/8" (3.18 mm) and to house ends of shutter coil.

B. Drive End Bracket Plate: Fitted with a sealed ball bearing.

C. Governor: When size requires, shutter to be equipped with an oscillating governor to control speed of descent (smaller sizes do not require a governor).

2.04 Guide Assembly

A. Guides: Of steel constructed in accordance with UL (ULC) approved details.

2.05 Hoods

A. Hoods: To house coil are to be rectangular and fabricated of #24 U.S. Gauge galvanized steel.

2.06 Locking

A. Integral Gearing: Of crank operator and removal of crank handle to provide locking for shutter.

2.07 Finish

A. Galvanized Surfaces: To be baked-on coat of epoxy-modified polyester. Color: Gray
B. Ungalvanized Surfaces: To consist of a shop coat of rust-inhibiting metallic primer on exposed ferrous surfaces.

PART 3 EXECUTION

3.01 Examination

A. Verify that dimensions are correct and project conditions are suitable for installation. Do not proceed with installation until unsatisfactory conditions have been corrected.

3.02 Installation

A. Installation: To be by an authorized Atlas Door representative and in accordance with Atlas Door standards and instructions.

B. Compliance: Installation to be in compliance with the latest NFPA 80.

C. Testing: Doors to be drop-tested and witnessed for normal operation after installation.

D. Maintenance: Per NFPA 80, Chapter 15-2.4.3: All coiling fire doors shall be inspected and tested annually to check for proper operation and full closure. Resetting of the release mechanism shall be done in accordance with the manufacturer's instructions. A written record shall be maintained and be made available to the authority having jurisdiction.

E. Submit manufacturer's product data and installation instructions for each type of coiling door. Include both published data and any specific data prepared for this project.

Note to Specifiers: Please see end of this section for frequently specified Optional Features.

OPENING WIDTH

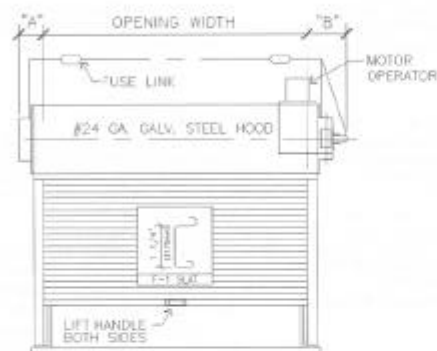
OPENING HEIGHT	OPENING WIDTH											CONSULT TECHNICAL SERVICES		
	"E" = 1-1/4" (31.75 mm)	"F" = 1-3/4" (44.45 mm)	1'-0" (304.8 mm)	2'-0" (609.6 mm)	3'-0" (914.4 mm)	4'-0" (1219 mm)	5'-0" (1524 mm)	6'-0" (1829 mm)	7'-0" (2134 mm)	8'-0" (2438 mm)	9'-0" (2743 mm)		10'-0" (3048 mm)	11'-0" (3353 mm)
0														CONSULT TECHNICAL SERVICES
1'-0" (304.8 mm)														
2'-0" (609.6 mm)														
3'-0" (914.4 mm)														
4'-0" (1219 mm)														
5'-0" (1524 mm)														
6'-0" (1829 mm)														
7'-0" (2134 mm)														
														6'-0" High (1829 mm)

LABELED COUNTER SHUTTER-MODEL L41*

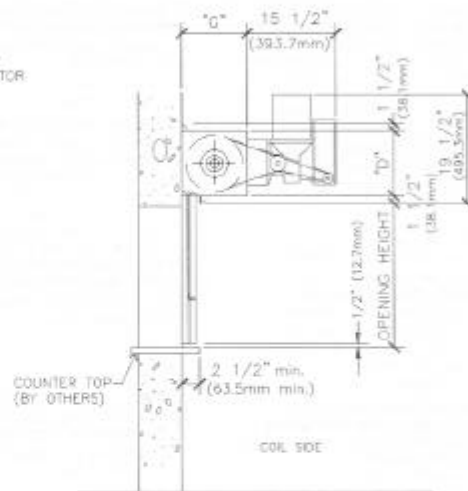
08330/ATL.
Buyline 0371

- Motor operated
- Interior face mounted

*Suffix letters indicate material and/or finish of curtain.
PS Galvanized with baked-on finish coat
ST Stainless steel



COIL SIDE ELEVATION
RIGHT HAND OPERATION AS SHOWN
LEFT HAND OPERATION IS OPPOSITE AS SHOWN



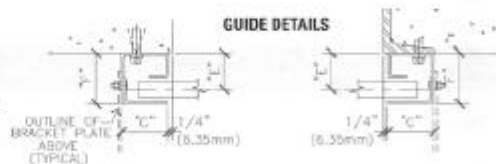
SECTION

Atlas Door™ has UL approval for mounting on drywall and steel tube walls. Call our Technical Services at 800-959-9559 for complete details and size limitations, or assistance on any special applications.

1-1/2" (38.1 mm) is dimension of top hood bead. Where headroom is limited 1-1/2" (38.1 mm) requirement can be eliminated by turning bead down.

Guides are required to be 1/2" (12.7 mm) above counter top (or floor) by UL (ULC) listing to allow for heat expansion in case of fire. Shutter, however, will close to counter or floor.

Where clearances are critical, dimensions shown can be reduced. Consult Technical Services.



atlas door™