

SPECIFICATIONS

PART 1 GENERAL

1.01 Section Includes

A. Type: Integral Frame Coiling Labeled Shutters are to be Atlas Door™ Model R12** as manufactured by Clopay Building Products Company, Inc.

B. Types of Construction:

1. **R12SS:** Stainless steel frame/stainless steel curtain slats.
2. **R12PP:** Galvanized steel frame/ galvanized steel curtain slats with baked-on finish coat.
3. **R12GV:** Stainless steel frame/ galvanized steel curtain slats with baked-on finish coat.
4. **R12SP:** Galvanized steel frame with baked-on finish coat/ stainless steel curtain slats.

C. Operation: To be manual push-up.

D. Mounting: To be set in pass thru wall opening without additional field assembly.

NOTE: Split frame construction not available.

E. Approval: Doors to be tested and approved by Underwriters' Laboratories, Inc.

F. Label: To be Class B (1-1/2) hour rating and may also be installed in openings with a lower rating.

G. Automatic Closing: Triggering of automatic closing mechanism by melting of fusible link at 165°F (74°C).

H. Dimension Limitation: Maximum labeled clear opening size is 6'-0" by 4'-0" (1829 mm by 1219 mm) or masonry opening size of 6'-8" by 5'-4" (2032 mm by 1626 mm).

1.02 Related Work

A. Opening preparation, miscellaneous or structural steel, access panels, finish or field painting, electrical wires, wiring, disconnect switches, conduit are in the scope of the work of other sections or trades.

B. Submit manufacturer's product data and installation instructions for each type of coiling door. Include both published data and any specific data prepared for this project.

1.03 Single-Source Responsibility

A. Provide doors, guides, motors, and accessories from one manufacturer for each type of door. Provide secondary components from source acceptable to manufacturer of primary components.

PART 2 PRODUCT

2.01 Curtain

A. Slats: Cold roll-formed in continuous lengths, interlocked to form curtains.

B. Endlocks: Each end of alternate slats to be fitted with endlocks to act as a wearing surface in the guides and to maintain slat alignment.

C. Gauge: Thickness of slat to satisfy Underwriter's Laboratories requirements.

D. Galvanizing: Zinc-coated in accordance with ASTM A653.

E. Bottom Bar: Curtain to be reinforced with bottom bar with lift handles.

2.02 Spring Counterbalance

A. Counterbalance: Housed in a steel pipe of diameter and wall thickness to restrict maximum deflection to .03" per foot (2.5 mm/m) of shutter width.

B. Springs: To be helical torsion type designed to include an overload factor of 25% and for optimum ease of operation. Springs are to be grease-packed and are to be mounted on a cold rolled steel inner shaft.

2.03 Bracket Plates

A. Bracket Plates: Carrying pipe counterbalancing shaft are to be no less than 1/8" (3.18 mm) and to house ends of shutter coil.

B. Drive End Bracket Plate: Fitted with a sealed ball bearing.

2.04 Frame and Hood

A. Frame: To be no less than #16 U.S. Gauge. Provide masonry (steel or wood) anchors integral with the frame construction.

B. Hood: To be no less than #16 U.S. Gauge and to enclose counterbalancing mechanism.

2.05 Guides

A. Guides: Integral with frame construction.

2.06 Sill

A. Sill: Integral with frame construction and no less than #14 U.S. Gauge filled with 2-1/2 lbs. (1.14 Kg) spintex insulation.

2.07 Locking

A. Slide Belts: On bottom bar suitable for padlocking (padlocks by others).

2.08 Finish

A. Stainless Steel: Curtain and frame #4 finish.

B. Galvanized Steel Frame: Shop applied rust-inhibiting primer.

C. Galvanized Steel Curtains: Baked on coat of epoxy-modified polyester. Color: Gray

PART 3 EXECUTION

3.01 Examination

A. Verify that dimensions are correct and project conditions are suitable for installation. Do not proceed with installation until unsatisfactory conditions have been corrected.

3.02 Installation

A. Installation: To be by an authorized Atlas Door representative and in accordance with Atlas Door standards and instructions.

B. Compliance: Installation to be in compliance with the latest NFPA Bulletin 80.

C. Testing: Doors to be drop-tested and witnessed for normal operation after installation.

D. Maintenance: Per NFPA 80, Chapter 15-2.4.3: All coiling fire doors shall be inspected and tested annually to check for proper operation and full closure. Resetting of the release mechanism shall be done in accordance with the manufacturer's instructions. A written record shall be maintained and be made available to the authority having jurisdiction.

E. Submit manufacturer's product data and installation instructions for each type of coiling door. Include both published data and any specific data prepared for this project.

Note to Specifiers... Please see end of this section for frequently specified Optional Features.

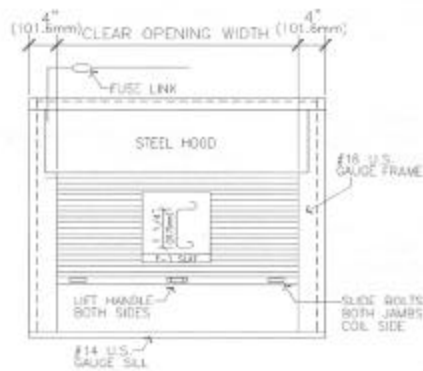
INTEGRAL FRAME LABELED SHUTTER-MODEL R12*

08330/ATL
Buyline 0371

- Manually operated
- Interior between jamb mounted

*Suffix letters indicate material and/or finish of curtain.

- SS Stainless shutter, stainless steel frame
- PP Galvanized steel shutter with baked-on finish coat, galvanized steel frame with baked-on finish coat
- GV Galvanized steel shutter with baked-on finish coat, stainless steel frame.
- SP Stainless steel shutter, galvanized steel frame with baked-on finish coat.

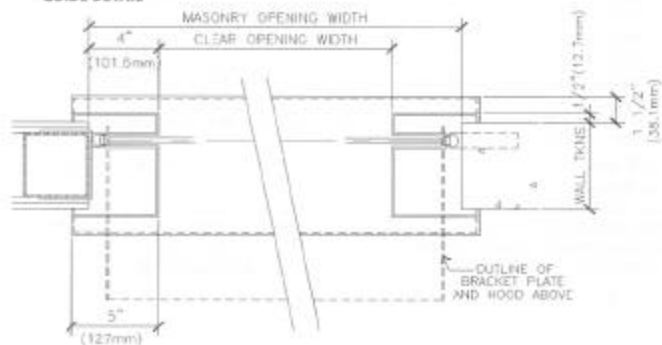


COIL SIDE ELEVATION
RIGHT HAND OPERATION AS SHOWN



SECTION

GUIDE DETAIL



Maximum labeled clear opening size is 6'-0" (1829 mm) wide by 4'-0" (1219 mm) high.

Units are to be class B (1-1/2" HR) rating with UL label.

Minimum wall thickness is 3-3/4" (95.25 mm).

Shutter must be installed in conjunction with wall assembly.

Where clearances are critical, dimensions shown can be reduced. Consult Technical Services.

atlas door™